

## Accessibility at the Crown

The Crown is a Grade II listed building. Obtaining approval to make alterations is a time consuming task as many organisations are involved.

Being a listed building, does not mean that accessibility cannot be improved.

We have been working with specialists to plan a number of changes, including:

- Improving parking and the approach
- Creating a ramped approach into the main hotel building
- Creating a ground floor accessible WC
- Creating some more accessible bedrooms
- Improving access to the Bailey function suite
- Providing a variety of furniture
- Providing an induction loop
- Training our staff

Alternative formats always available

## Improving our hotel accessibility

We are committed to making our hotels more accessible.

At Stoke Place in Stoke Poges and The Old Bell in Hurley we have made access improvements, particularly for wheelchair users. We now have ground floor toilet facilities and enhanced bedroom layouts.

Improvements at the Crown Inn are underway. Many alterations are subject to Planning and Listed Building consent and may take some time.

Please bear with us while we complete a range of improvements. We would welcome any suggestions regarding accessibility.



DHILLON GROUP  
16 High Street, Amersham Buck HP7 0DH.

T: +44 (0) 1494 721 541

F: +44 (0) 1494 431 283

W: [www.crown.com](http://www.crown.com)

## The Crown Inn Amersham



## Accessibility

16 High Street, Amersham, Bucks HP7 0DH

t +44 (0) 1494 721 541

f +44 (0) 1494 431 283

dhillon  
group



At the Crown we extend a warm welcome to all our customers. We take all of our responsibilities and legal obligations very seriously and as a company do not tolerate discrimination of any nature.

We are constantly improving and upgrading facilities, including access at all our hotels, during on-going refurbishments.

As our customer needs change constantly, this is a continuous process. We understand that accessibility regulations are based on averages and do not suit everyone.

We thought it best to let you see our facilities with our access limitations so that you can tell whether they meet your individual requirements.

This leaflet provides a little detail on our arrangements. Please ask at reception for further guidance.

# Accessibility at The Crown Inn

## Approach

The approach from the High Street has wide pavements but limited dropped kerbs. From the rear car park the approach is uneven, cobbled in parts and set on an incline.



## Parking

We have some parking spaces at the Rear of the hotel. We can make Arrangements for accessible parking. Please notify staff in advance so we Are ready for your requirements.



## Entrances

We have some steps at our main and bar entrances and a stepped threshold into the Bailey room at the Rear. Please contact staff for further information.



## Reception

Our reception counter is set at two heights. We have an induction loop available. All our staff are access Aware and can assist with your requirements.



## Bedrooms

We do not have lifts to our upper Floor rooms. All of our rooms outside The main hotel building have an Inclined approach and a step or Stepped threshold at the entrance. We can describe the rooms so that you can choose the most Suitable. Please contact staff for further information.



## Dining

Our restaurant is on the Ground floor. We also have A dining area opposite, Three steps down.



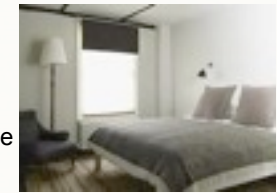
## Bar

Access to the bar is not Step free. We provide a Variety of furniture. The Counter is set at standing Height only. We also offer a waiter service at tables.



## Toilets

Our gents toilet is set on the ground floor, up a large step. We do not have a ground floor ladies WC Or an accessible WC.



## Stairs

We cannot change our stairs and handrails due to listed building consents. Please take care, as the Timber is old and dark.



## Courtyard

The courtyard has an Uneven cobblestone surface with a rainwater drain. We do not have a variety of furniture but we are aiming to change this soon. We plan to alter the patio area to include ramped access.

